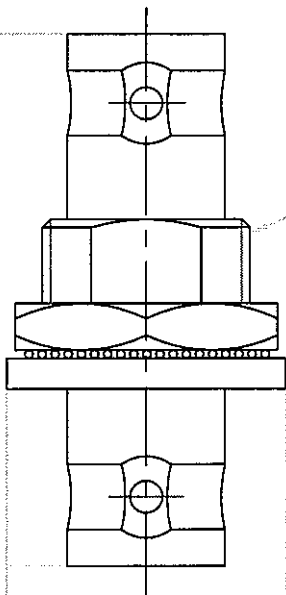
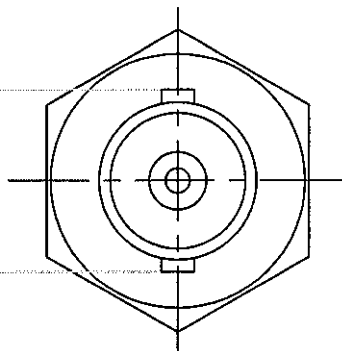


14 HEX



Ø15.3



11.0

1/2-28 UNEF (DELRIN)
FLAT 11.7

32.5 REF

					DIMENSIONS ARE IN MILLIMETERS UNLESS OTHERWISE SPECIFIED TOLERANCES			PART NO	DATE	BN-1637 (10HC05FG17)
6	SCREW	DEL RIN	WHITE	1	0.5-5 =±0.2 5-30 =±0.4 30-120 =±0.6 120-315 =±1 315-1000 =±1.6 1000-2000 =±2.4	APPROVED WOUDY	DATE	TITLE DOUBLE BNC FEMALE BULKHEAD		
5	NUT	BRASS	NICKEL	1			DATE			
4	INSULATOR	DEL RIN	WHITE	1			CHECKED LDCY		DATE	
3	LOCK WASHER	STEEL	NICKEL	1			DRAWING NO MCI-70621 750HM			
2	CENTER CONTACT	BRASS	GOLD	1						
1	BODY	BRASS	NICKEL	1						
NO	DESCRIPTION	MATERIAL	FINISH	QTY	SCALE	ISSUE	DRAWN LED	DATE	FILE NO	