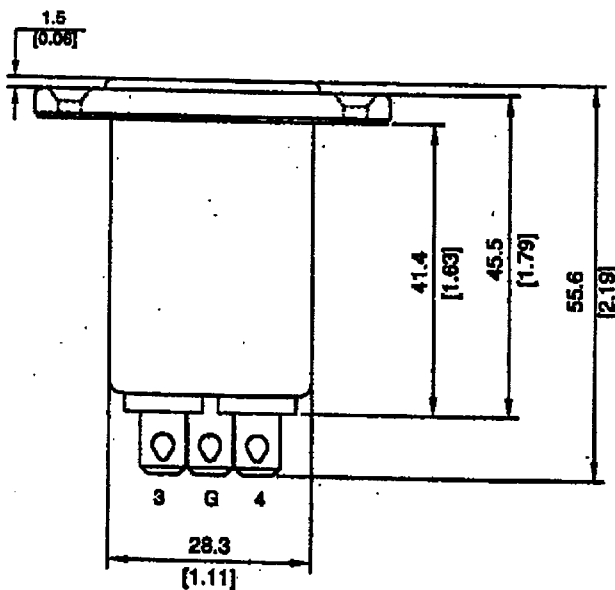
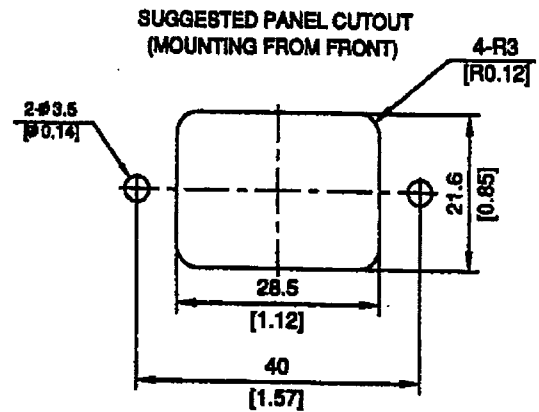
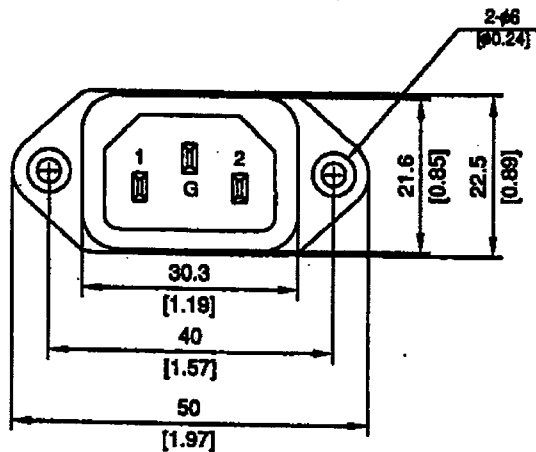


# SPECIFICATION

## 1. PHYSICAL DIMENSIONS:



Drawing By	Checked By	Approved By	Ordering No.	Unit	Rev.	Dimension Limit	Tolerance
程	程	程	06SS1-Q(S)	mm	Rev.2	0 ~ 10	±0.3
202.11.27	202.11.27	202.11.27		inch		10 ~ 100	±0.5
周維明	江傑	周維明				100 ~ 150	±0.8
						150 ~ 250	±1

# SPECIFICATION

2. PART NUMBER:  $\mu$ 6SS1-Q(S)

## 3. CHARACTERISTICS:

(1)VOLTAGE RATING: 115/250VAC

(2)CURRENT RATING:

- a. AT 115VAC..... 6A RMS Max.  
b. AT 250VAC..... 6 A RMS Max.

(3)OPERATING FREQUENCY: 50/60Hz

(4)LEAKAGE CURRENT:  
EACH LINE TO GROUND

- a. @115VAC/50Hz.....0.25mA Max.  
b. @250VAC/50Hz.....0.45mA Max.

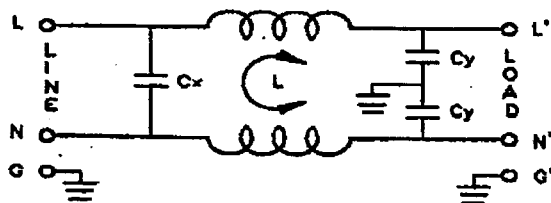
(5)HIPOT RATING (FOR ONE MINUTE)

- a. LINE TO GROUND.....2250VDC  
b. LINE TO LINE.....1450VDC

(6)IR:100M  $\Omega$  at 500VDC any input or output to ground

(7)TEMPERATURE RANGE: -25°C TO +85°C

## 4. ELECTRICAL SCHEMATIC:



L:0.8mH

Cx:0.1uF (X2)  
Cy:2200pF (Y)X2

## 5. SAFETY APPROVALS:

UL:E179761  
CSA:1158258(188498/LR111620)  
VDE:116260  
SEMKO:0204061/01  
DEMKO:310306-03  
NEMKO:P02100495  
FIMKO:16309A3(215928)

6. Minium insertion loss(In 50  $\Omega$  system)

MHz	0.01	0.05	0.10	0.15	0.5	1.0	5.0	10.0	30.0
COMMODE	0	0	5	8	18	25	31	36	27
DIFF.MODE	0	0	7	10	15	19	36	42	47