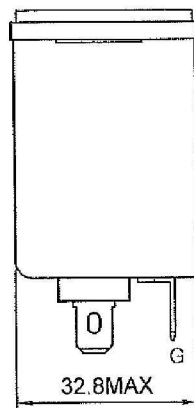
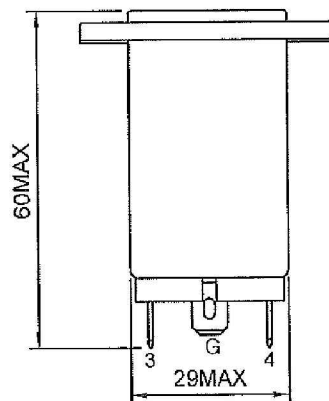
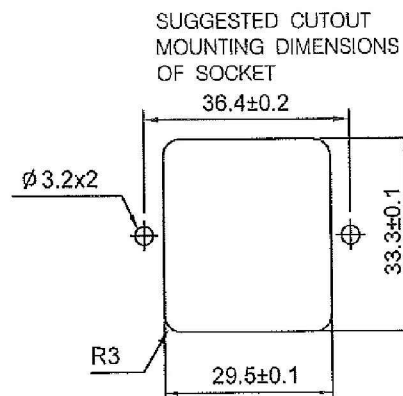
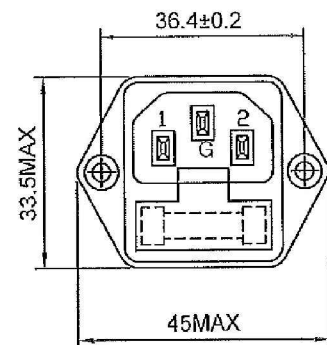
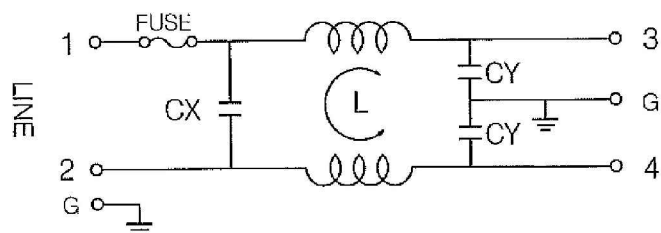


1. PHYSICAL DIMENSIONS:(mm)



2. SCHEMATIC:



CX : 0.1uF
CY : 3300pF
L : 2 x 0.7mH

3. ELECTRICAL CHARACTERISTICS:

- 3-1. RATED VOLTAGE.....125/250VAC
- 3-2. RATED CURRENT.....6A
- 3-3. OPERATING FREQUENCY.....50/60Hz
- 3-4. LEAKAGE CURRENT: EACH LINE TO GROUND
250VAC 50Hz..... 0.8mA MAX
- 3-5. HIPOT RATING:(FOR ONE MINUTE)
LINE TO LINE.....1450VDC
LINE TO GROUND.....1800VAC
- 3-6. INSULATION RESISTANCE.....250VDC/100M OHM MIN
- 3-7. DIRECT CURRENT RESISTANCE.....0.15 OHM MAX
- 3-8. OPERATING TEMPERATURE.....-25 TO +85°C

4. SAFETY COMPLIANCE:

UL FILE NO:E134751
CSA FILE NO:LR95210
VDE FILE NO:40007880
CQC FILE NO:12001067993
CE