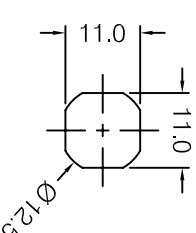


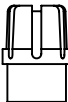








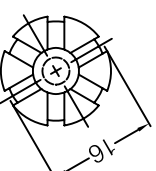
FINISHED PRODUCT VIEW

P/NO	KNOB	INSULATOR HOUSE	BOTTOM PLATE	FINISH
PT-2116R	CLEAR (RED MARK)	CLEAR	RED	GOLD
PT-2116B	CLEAR(BLK MARK)	CLEAR	BLACK	GOLD

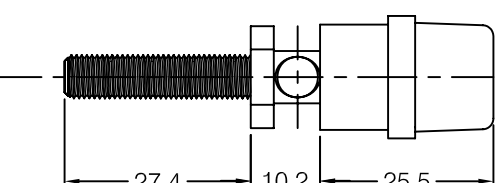


PANEL CUT-OUT

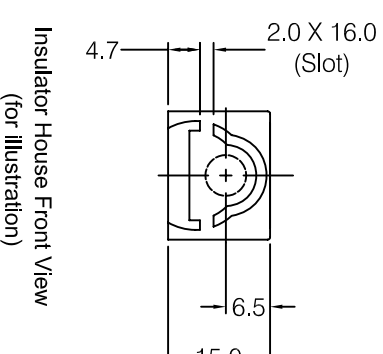
Parts	Description	Material	Remark
	Knob	Resin	Clear
	Insulator House	Resin	Clear
	Spindle with Cross Hole Ø 6mm	Brass	1/4" UNF Thread with painted Red/Black Head & Gold Flash w Nickel Under-Plate
	Bottom Insulator Plate	Polyamide	5mm Thick Black or Red
	Plain Washer	Steel Alloy	Gold Flash with Nickel Under-Plate
	Spring Washer	Stainless Steel	—
	Nuts(2 No.)	Steel Alloy	1/4"UNF Thread & Gold Flash with Nickel Under-Plate



Plastic Knob Top View
(for illustration)



Bottom Face of
Insulator House



DIMENSIONS IN MILLIMETERS

3rd ANGLE PROJECTION

SCALE: N.T.S

				DRAWN PYQ	MATERIAL: SEE TABLE
2	Pict. Update	12/2021/5			
1	1st DRAWN	16/10/14			
ISSUE	AMEND	DATE		CHECKED PCS	FINISH: SEE TABLE

	<p>TOLERANCES</p> <p>NO DECIMAL PLACE ± 1.0</p> <p>1 DECIMAL PLACE ± 0.50</p> <p>2 DECIMAL PLACES ± 0.10</p> <p>DIAMETER HOLES ± 0.10</p> <p>ANGLES $\pm 1/2$ DEGREE</p> <p>(UNLESS OTHERWISE STATED)</p>
--	---



TITLE: SINGLE CLEAR TOUCH PROOF 60A
BINDING POST (BLACK/RED)

