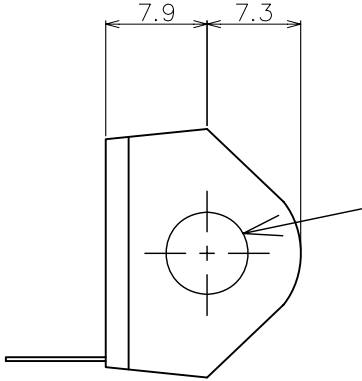
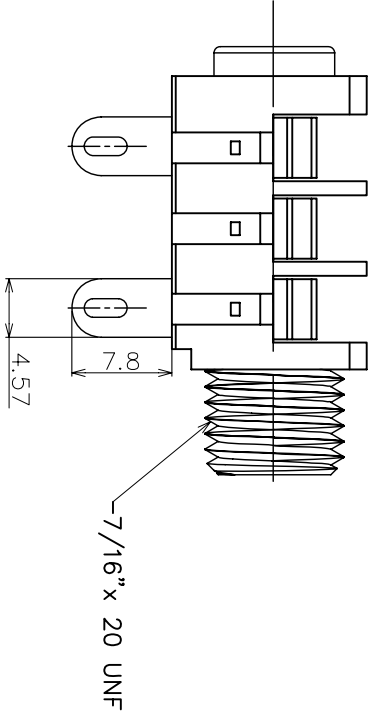
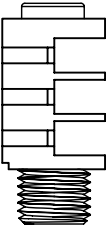

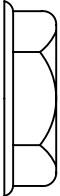

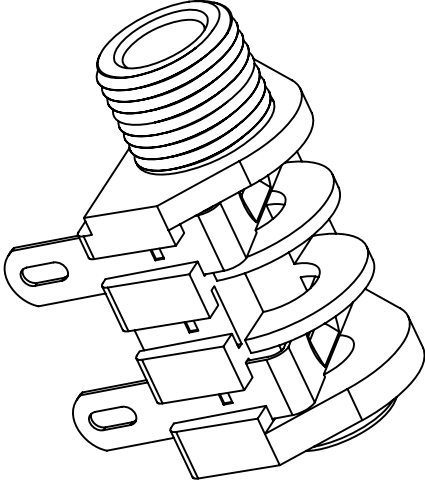


INTERNAL HOLE DIA. Ø6.4



MATERIAL PROPERTIES

Parts	Description	Material	Remark
	Jack Body	Polymamide	Black
	FIBRE WASHER (1.6mm Th.)	Vulcanized Fibre	Black
	Plastic Nut	Polymamide	Black
	Metal Contact	Nickel Silver	Tin Plated



ISOMETRIC VIEW

DIMENSIONS IN MILLIMETERS

3rd ANGLE PROJECTION

SCALE: N.T.S

SUPPLY NUTS AND WASHERS AS LOOSE PARTS.

DRAWN	MATERIAL:	AS TABLE	TOLERANCES
PYQ			NO DECIMAL PLACE ± 1.0 1 DECIMAL PLACE ± 0.5 2 DECIMAL PLACES ± 0.1 DIAMETER HOLES ± 0.1 ANGLES ± 1/2 DEGREE (UNLESS OTHERWISE STATED)
CHECKED	FINISH:	AS MOULDED	
PCS			
1	1st DRAWN	05/07/14	
ISSUE	AMEND	DATE	



TITLE: 6.35 PHONE JACK, SOLDER TAG/SNS
DRWG NO: JT-2010