

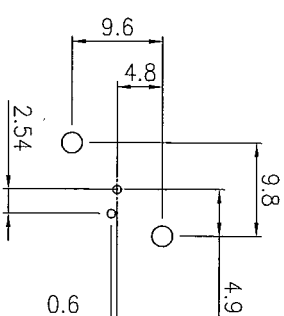
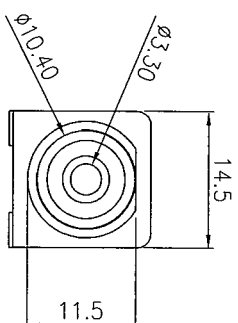
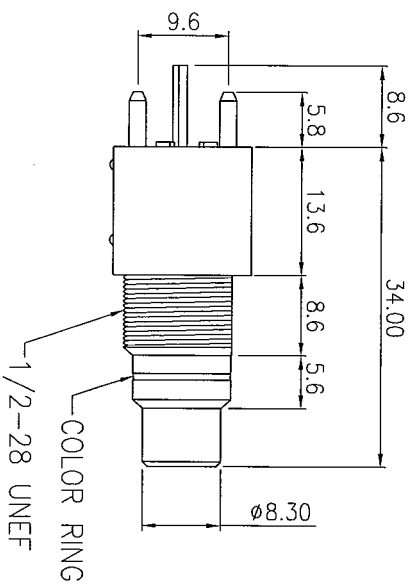
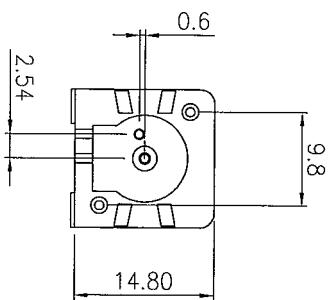
CUSTOMER TDI GROUP FILE NO. PS-9110-9130

THIS DRAWING AND SPECIFICATIONS HEREIN ARE THE
CONFIDENTIAL PROPERTY OF SAMMAR AND SHALL NOT
BE REPRODUCED OR COPIED OR DISCLOSED IN WHOLE
OR IN PART WITHOUT WRITTEN PERMISSION.

REV. DESCRIPTION
0 INITIAL RELEASE

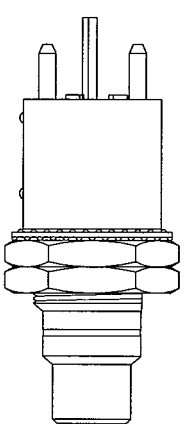
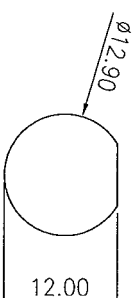
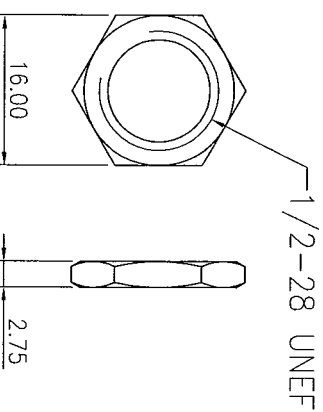
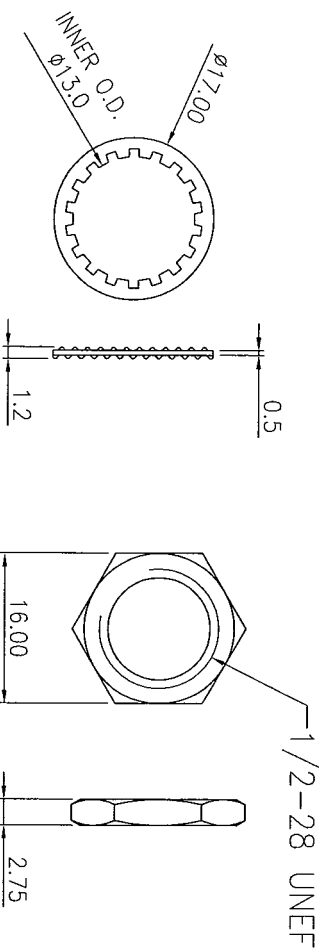
DRAWN / DATE APPROVED / DATE
YANG 12/31/2003 LYN 12/31/2004

DRAFT



BODY

P.C.B. CONFIGURATION



WASHER

HEX NUT
2 PCS

MOUNTING HOLE

ASSEMBLY

DIMENSIONS ARE IN
MOLD NO. mm
TOLERANCES ARE
FRACTIONS DECIMALS ANGLES
.X .0.2 [0.008]
.XX .0.12[0.005]

MATERIAL
FINISH
COLOR

SAMMAR

GOLD PLATED
RCA JACK

P/N PS-9110/9130 PROJECT NO. DRAWN YANG DATE 12/31/2003
SCALE 1.25:1 SIZE A4 SHEET 1 OF 1

P/N	COLOR RING
PS-9110	W/BLACK COLOR RING
PS-9130	W/RED COLOR RING